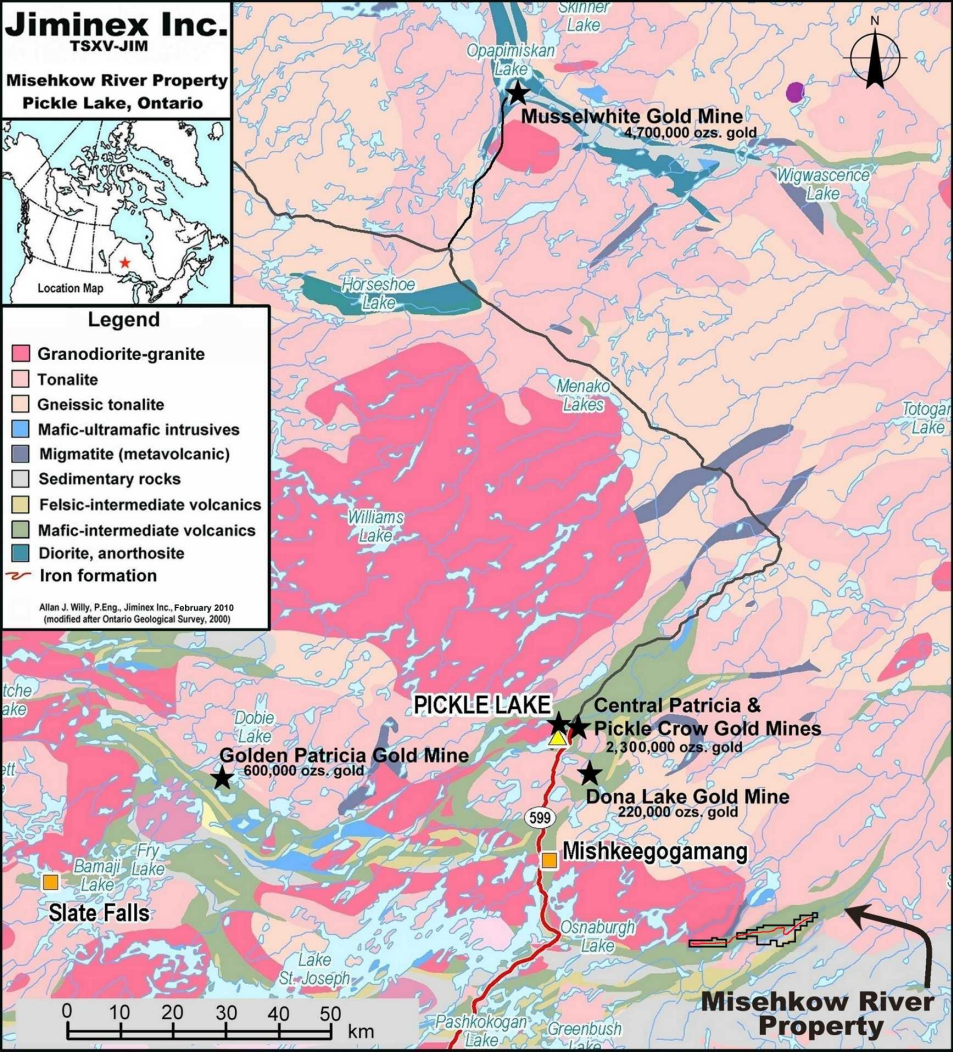




Legend

- Granodiorite-granite
- Tonalite
- Gneissic tonalite
- Mafic-ultramafic intrusives
- Migmatite (metavolcanic)
- Sedimentary rocks
- Felsic-intermediate volcanics
- Mafic-intermediate volcanics
- Diorite, anorthosite
- Iron formation

Allan J. Willy, P.Eng., Jiminex Inc., February 2010
(modified after Ontario Geological Survey, 2000)



Misehkw River Property